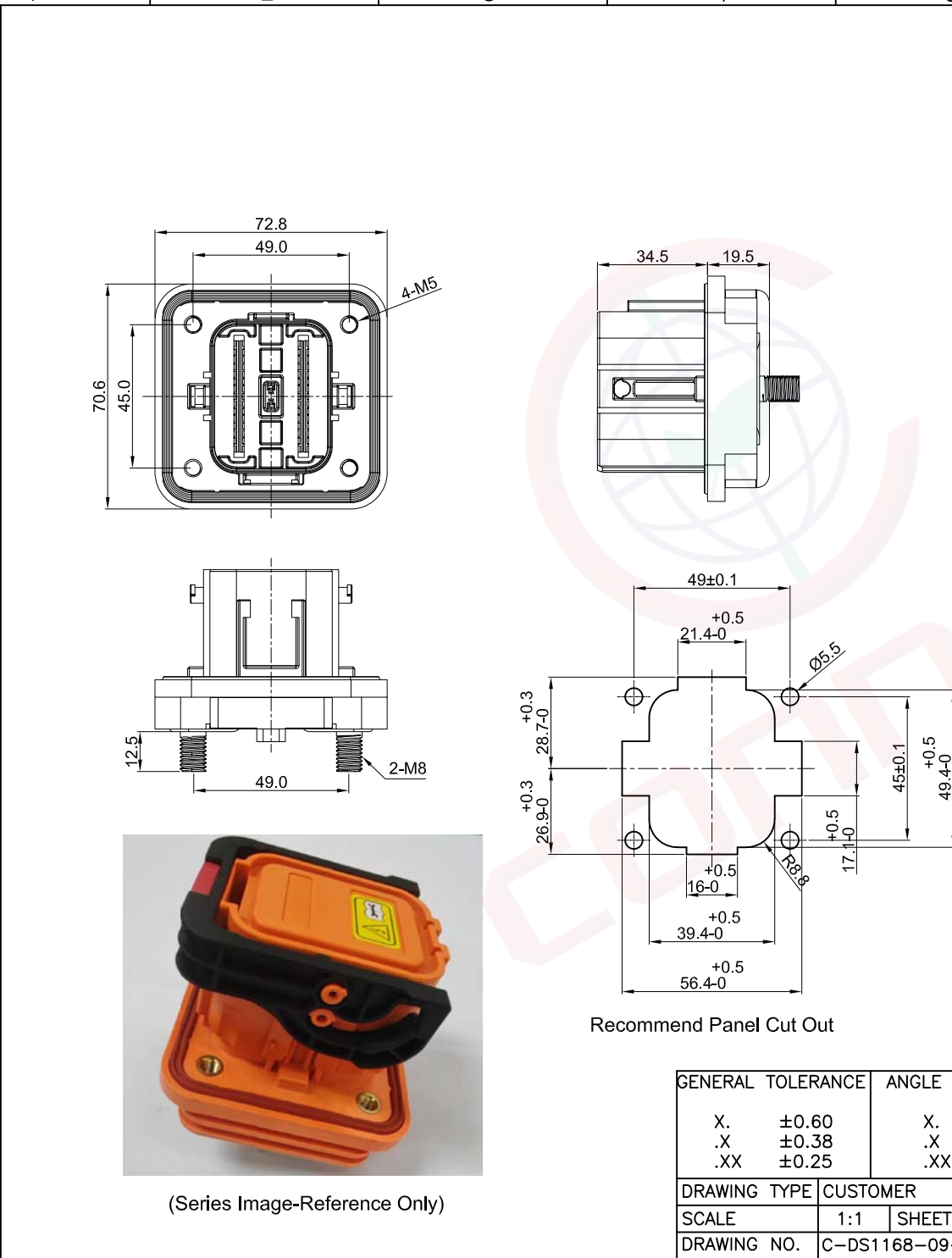


The information provided herein is from CONNELY Electronic Co., Ltd. and is confidential. Any disclosure to a party other than the recipient is prohibited. The intellectual properties and its rights contained herein, including but not limited to, trademarks, patents, copyrights, trade secrets, and technical know-how, are owned exclusively by CONNELY or its affiliates. Unauthorized use of this information in any format or manner. CONNELY may enforce its intellectual property rights at its own discretion; failures or delays to exercise such rights does not constitute a waiver of such rights.



REV.	DESCRIPTION	DRAWN	CHECKED	APPROVED
A	NEW RELEASE	JLZ 05/23/25'		

NOTES:
 Rated voltage:1500V/DC.
 Rated current:350A(95mm²) Max.
 Temp.Range:-40°C~+125°C.
 Protection grade:IP67.

Materials:
 Contact: Copper Alloy,Ag plated.
 Insulator: Plastic.
 Sealings: Silicone
 Product Number Code:

DS1168-09 - X X X X X
 Contact plating
 Y:Silver
 Housing color
 E:Orange
 Mounting type
 S: Straight Type
 Connector type
 F: Female
 Rated current
 350:350A



(Series Image-Reference Only)

Recommend Panel Cut Out

GENERAL TOLERANCE		ANGLE TOLERANCE		PROJECTION		TITLE	
X.	±0.60	X.	±5°	UNITS	mm	350A Energy Storage Connector Mini MSD Type	
.X	±0.38	.X	±3°	SHEET SIZE	A4	SERIES DS1168-09 SERIES	
.XX	±0.25	.XX	±2°	晨翔电子有限公司 CONNFLY CONNELY ELECTRONIC CO. LTD			
DRAWING TYPE		CUSTOMER					
SCALE		1:1 SHEET 1 OF 2					
DRAWING NO.				C-DS1168-09-XXXXXX-A			

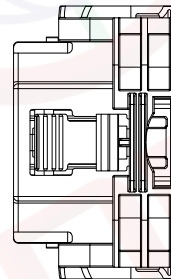
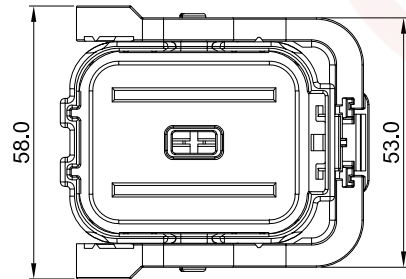
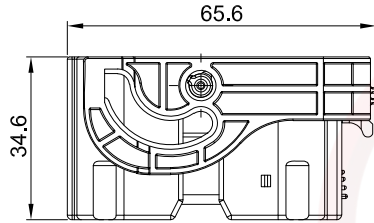
The information provided herein is from CONNELY Electronic Co., Ltd. and is confidential. Any disclosure to a party other than the recipient is prohibited. The intellectual properties and its rights contained herein, including but not limited to, trademarks, patents, copyrights, trade secrets, and technical know-how, are owned exclusively by CONNELY or its affiliates. Unauthorized use of this information in any format or manner. CONNELY may enforce its intellectual property rights at its own discretion; failures or delays to exercise such rights does not constitute a waiver of such rights.

1 2 3 4 5 6 7 8

REV.	DESCRIPTION	DRAWN	CHECKED	APPROVED
A	NEW RELEASE	JLZ 06/29/24'		

Dept
Qty

DC 1
ED 1
IE 1
ISO 1
PD 1
R&D 1
SD 1
QA 1
QC 1
QE 1



(Series Image-Reference Only)

NOTES:

Rated voltage:1500V/DC.
Rated current:350A(95mm²) Max.
Temp.Range:-40°C~+125°C.
Protection grade:IP67.

Materials:

Contact: Copper Alloy,Ag plated.
Insulator: Plastic.
Sealings: Silicone
Product Number Code:

DS1168-09 - X X X X X

- X X X X X
- Contact plating
Y:Silver
- Housing color
E:Orange
- Mounting type
L: Lock Type
- Connector type
M: Male
- Rated current
350:350A

GENERAL TOLERANCE		ANGLE TOLERANCE		PROJECTION	TITLE
X.	±0.60	X.	±5°		350A Energy Storage Connector
.X	±0.38	.X	±3°	mm	Mini MSD Type
.XX	±0.25	.XX	±2°	A4	SERIES DS1168-09 SERIES
DRAWING TYPE		CUSTOMER		晨翔电子有限公司 CONNFLY CONNFLY ELECTRONIC CO. LTD	
SCALE		1:1	SHEET 2 OF 2		
DRAWING NO.		C-DS1168-09-XXXXXX-A			

1 2 3 4 5 6 7 8